

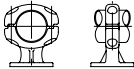
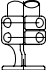
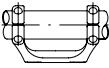
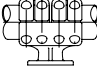
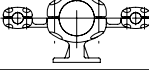

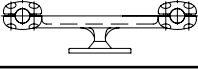

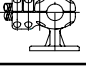
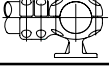

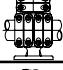
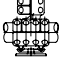


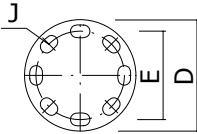
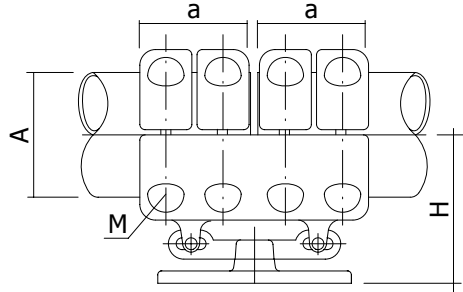
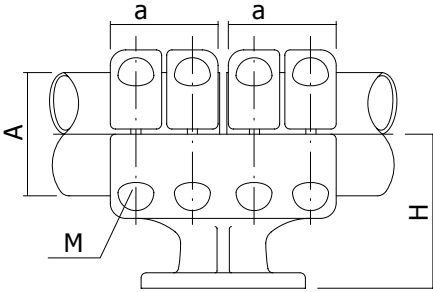
CONECTADORES ELÉCTRICOS

PARA EL TRANSPORTE Y DISTRIBUCIÓN
DE LA ENERGÍA ELÉCTRICA

Material para puesta a tierra
Material para baja y media tensión
Material para alta tensión
Material para tensiones superiores a 220 Kv

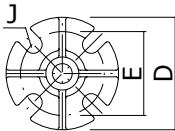


REFERENCIA CODE RÉFÉRENCE	TIPO DE CONEXION TYPE OF CONNECTION TYPE DE CONNEXION	ESQUEMA SCHEME SCHÉMA	CONDUCTORES CONDUCTORS CONDUCTEURS	PÁGINA PAGE PAGE
7511	SOPORTE		TUBO	
	SUPPORT		TUBE	
	SUPPORT		TUBE	
7512	SOPORTE		TUBO DESLIZANTE	
	SUPPORT		SLIDE TUBE	
	<i>SUPPORT</i>		TUBE À COULISSE	
7513	SOPORTE		TUBO VERTICAL	
	SUPPORT		VERTICAL TUBE	
	SUPPORT		TUBE VERTICAL	
7520	SOPORTE		TUBO	
	<i>SUPPORT</i>		TUBE	
	<i>SUPPORT</i>		TUBE	
7521	SOPORTE		TUBO - TUBO	
	<i>SUPPORT</i>		TUBE - TUBE	
	<i>SUPPORT</i>		TUBE - TUBE	
7522	SOPORTE		TUBO - TUBO	
	<i>SUPPORT</i>		TUBE - TUBE	
	<i>SUPPORT</i>		TUBE - TUBE	
7531	SOPORTE		TUBO - CABLE	
	<i>SUPPORT</i>		TUBE - CABLE	
	<i>SUPPORT</i>		TUBE - CÂBLE	
7532	SOPORTE		TUBO - CABLE DUPLEX	
	SUPPORT		TUBE - DUPLEX CABLE	
	SUPPORT		TUBE - CÂBLE DUPLEX	
7541	SOPORTE		CABLE	
	SUPPORT		CABLE	
	SUPPORT		CABLE	
7542	SOPORTE		CABLES EN PARALELO	
	SUPPORT		PARALLEL CABLES	
	SUPPORT		CÂBLES EN PARALLÈLE	
7545	SOPORTE		CABLE - CABLE	
	SUPPORT		CABLE - CABLE	
	SUPPORT		CÂBLE - CÂBLE	
7546	SOPORTE		CABLE - CABLE	
	SUPPORT		CABLE - CABLE	
	SUPPORT		CÂBLE - CÂBLE	
7561	SOPORTE		TUBO - TUBO (HORIZONTAL)	
	SUPPORT		TUBE - TUBE (HORIZONTAL)	
	SUPPORT		TUBE - TUBE (HORIZONTAL)	
7562	SOPORTE		TUBO - TUBO (VERTICAL)	
	SUPPORT		TUBE - TUBE (VERTICAL)	
	SUPPORT		TUBE - TUBE (VERTICAL)	
7571	SOPORTE		TUBOS - TUBO	
	SUPPORT		TUBES - TUBE	
	SUPPORT		TUBES - TUBE	
7573	SOPORTE		TUBOS - TUBO	
	SUPPORT		TUBES - TUBE	
	SUPPORT		TUBES - TUBE	

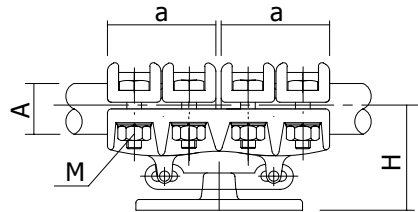
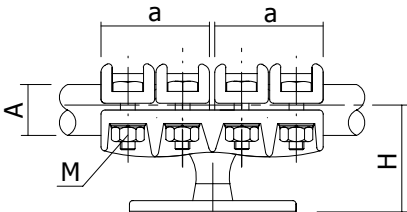


AISLADOR			
Referencia	J	E	D
1	14	76	105
2	18	127	155
3	18	225	260

Referencia	AØ	a	H	M	Referencia
7521A - 70	70	95	115	M-12	7522A - 70
7521A - 80	80	100	115	M-12	7522A - 80
7521A - 90	90	100	120	M-12	7522A - 90
7521A - 100	100	100	125	M-12	7522A - 100
7521A - 120	120	105	150	M-14	7522A - 120
7521A - 150	150	115	170	M-14	7522A - 150
7521A - 200	200	120	190	M-16	7522A - 200
7521A - 250	250	120	220	M-16	7522A - 250



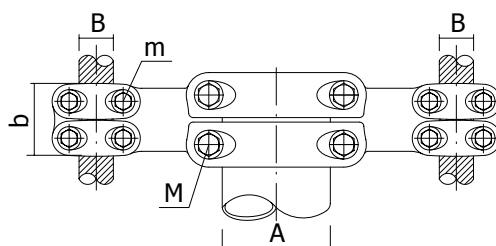
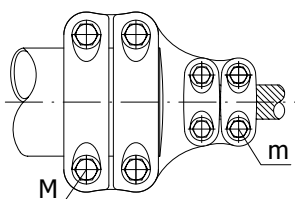
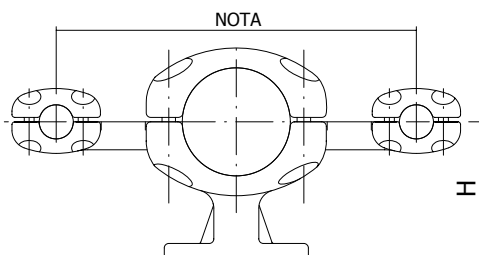
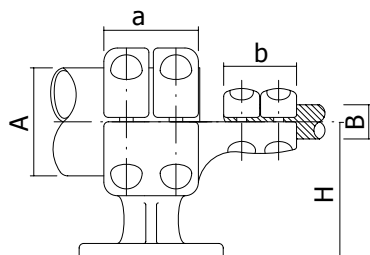
Referencia	AØ	a	H	M	Referencia
7521B - 25	25	25	50	M-8	7522B - 25
7521B - 30	30	30	50	M-10	7522B - 30
7521B - 40	40	35	50	M-10	7522B - 40
7521B - 45	45	35	50	M-10	7522B - 45
7521B - 50	50	40	50	M-10	7522B - 50



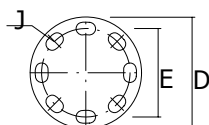
NOTA: Indicar en la referencia el aislador ejemplo 7521A - 80.2 // 7522B - 40.2

NOTA: Medidas mínimas / NOTE: Minimum measurements / NOTE: Mesures minimales

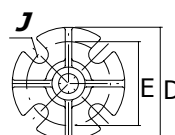




Referencia	AØ	BØ	a	b	H	M	m	Referencia
7531A - 7020	70	19-24	95	80	115	M-12	M-10	7532A - 7020
7531A - 7025	70	25-30	95	85	115	M-12	M-10	7532A - 7025
7531A - 8025	80	25-30	100	85	115	M-12	M-10	7532A - 8025
7531A - 8035	80	32-36	100	95	115	M-12	M-12	7532A - 8035
7531A - 10025	100	25-30	100	85	125	M-12	M-10	7532A - 10025
7531A - 10035	100	32-36	100	95	125	M-12	M-12	7532A - 10035
7531A - 12025	120	25-30	105	85	150	M-14	M-10	7532A - 12025
7531A - 12035	120	32-36	105	95	150	M-14	M-12	7532A - 12035
7535A - 12040	120	37-40	105	120	150	M-14	M-10	7532A - 12040
7531A - 15025	150	25-30	115	85	170	M-14	M-10	7532A - 15025
7531A - 15035	150	32-36	115	95	170	M-14	M-12	7532A - 15035
7531A - 15040	150	37-40	115	120	170	M-14	M-10	7532A - 15040
7531A - 20035	200	32-36	120	95	190	M-16	M-12	7522A - 20035
7531A - 25035	250	32-36	120	95	220	M-16	M-12	7522A - 25035



AISLADOR			
Referencia	J	E	D
1	14	76	105
2	18	127	155
3	18	225	260

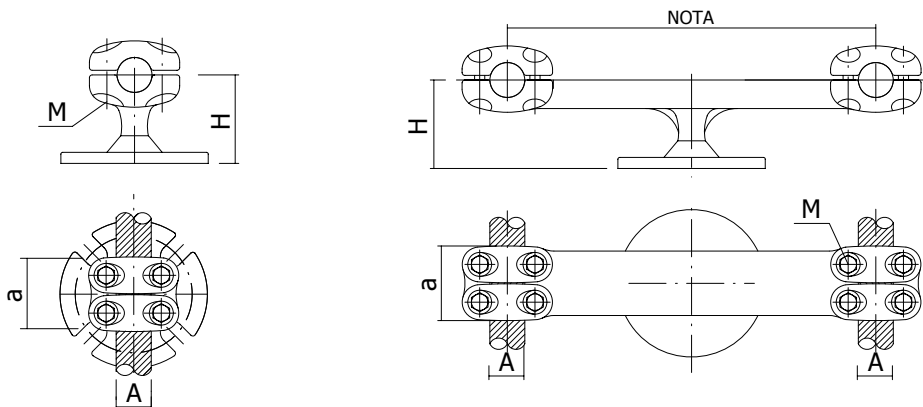


NOTA : Indicar en la referencia el aislador y la distancia entre cables Ejemplos 7531A - 7020.2 // 7532A - 7020.2(200) 223

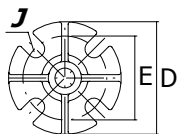
NOTA: Medidas mínimas / NOTE: Minimum measurements / NOTE: Mesures minimies

SOPORTE PARA CABLE 7541

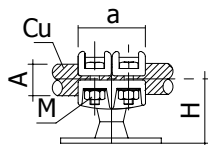
SOPORTE PARA CABLES EN PARALELO 7542



AISLADOR			
Referencia	J	E	D
1	14	76	105
2	18	127	155
3	18	225	260



Referencia	AØ	a	H	M	Referencia
7541A - 15	14-18	75	80	M-8	7542A - 15
7541A - 20	19-24	80	80	M-10	7542A - 20
7541A - 25	25-30	85	80	M-10	7542A - 25
7541A - 35	32-36	95	80	M-12	7542A - 35
7541A - 40	37-40	120	80	M-10	7542A - 40



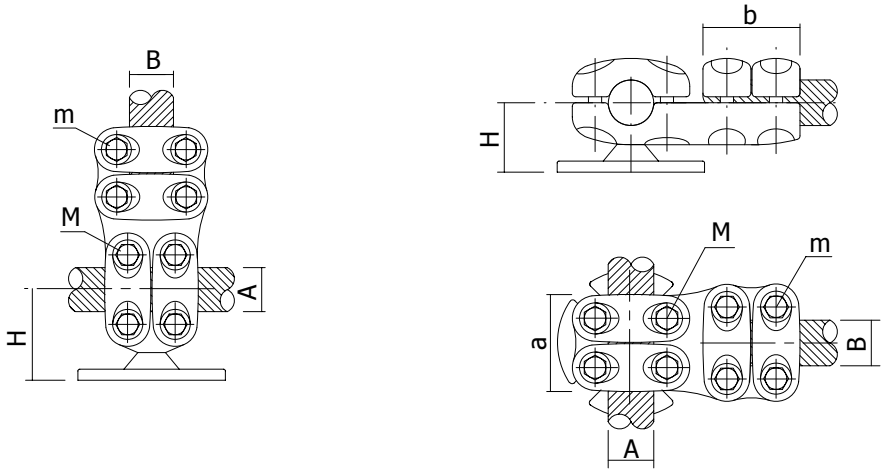
Referencia	AØ	a	H	M
7541B - 15	14-18	60	50	M-8
7541B - 20	19-24	65	50	M-8
7541B - 25	25-30	75	50	M-10

NOTA: Indicar en la referencia el aislador y la separación entre cables Ejemplo 7541A - 25.2 // 7542A - 25(200).1

NOTA: Medidas mínimas / NOTE: Minimum measurements / NOTE: Mesures minimales

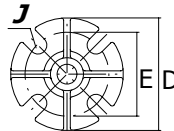


SOPORTE VERTICAL PARA CABLES EN T 7545
SOPORTE PARA CABLES EN T 7546



Referencia	AØ	a	H	M	Referencia
7545A - 15	14-18	75	80	M-8	7546A - 15
7545A - 20	19-24	80	80	M-10	7546A - 20
7545A - 25	25-30	85	80	M-10	7546A - 25
7545A - 35	32-36	95	80	M-12	7546A - 35
7545A - 40	37-40	120	80	M-10	7546A - 40

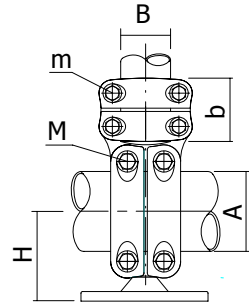
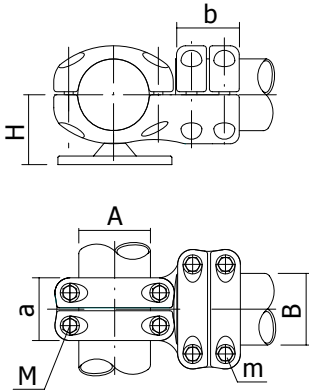
AISLADOR			
Referencia	J	E	D
1	14	76	105
2	18	127	155
3	18	225	260



NOTA : Indicar en la referencia el aislador Ejemplo 7545A - 2020.1 // 7546A - 2020.2

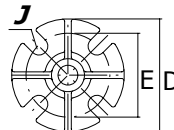
NOTA: Medidas mínimas / NOTE: Minimum measurements / NOTE: Mesures minimes





TUBOS DE ALUMINIO								
Referencia	AØ	BØ	a	b	H	M	m	Referencia
7561A - 7050	70	50	95	90	115	M-12	M-10	7562A - 70
7561A - 8060	80	60	100	95	115	M-12	M-12	7562A - 80
7561A - 10050	100	50	100	90	125	M-12	M-12	7562A - 90
7561A - 100100	100	100	100	100	125	M-12	M-12	7562A - 100
7561A - 120100	120	100	105	100	150	M-14	M-12	7562A - 120
7561A - 150100	150	100	115	100	170	M-14	M-12	7562A - 150
7561A - 200120	200	120	120	105	190	M-16	M-14	7562A - 200
7561A - 250100	250	100	120	100	220	M-16	M-12	7562A - 250

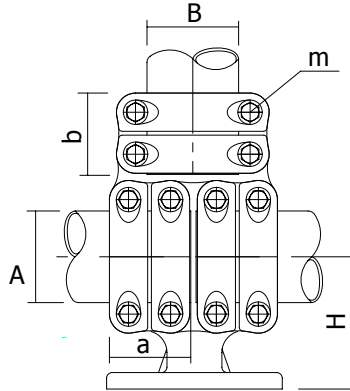
AISLADOR			
Referencia	J	E	D
1	14	76	105
2	18	127	155
3	18	225	260



NOTA : Indicar en la referencia el aislador Ejemplo 7561A - 7050.1 // 7562A - 10050.2

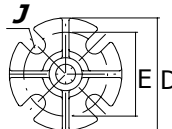
NOTA: Medidas mínimas / NOTE: Minimum measurements / NOTE: Mesures minimales





Referencia	AØ	BØ	a	b	H	M	m
7571A - 7050	70	50	95	90	115	M-12	M-10
7571A - 8060	80	60	100	95	115	M-12	M-12
7571A - 10050	100	50	100	90	125	M-12	M-12
7571A - 100100	100	100	100	100	125	M-12	M-12
7571A - 120100	120	100	105	100	150	M-14	M-12
7571A - 150100	150	100	115	100	170	M-14	M-12
7571A - 200120	200	120	120	105	190	M-16	M-14
7571A - 250100	250	100	120	100	220	M-16	M-12

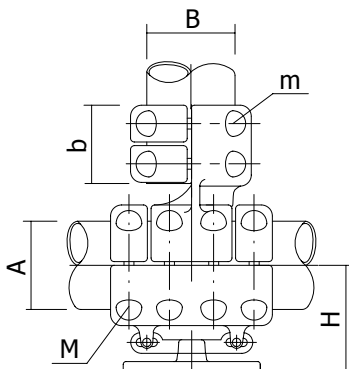
AISLADOR			
Referencia	J	E	D
1	14	76	105
2	18	127	155
3	18	225	260



NOTA : Indicar en la referencia el aislador Ejemplo 7571A - 7050.2

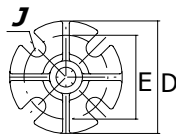
NOTA: Medidas mínimas / NOTE: Minimum measurements / NOTE: Mesures minimies





Referencia	AØ	BØ	a	b	H	M	m
7573A - 7050	70	50	95	90	115	M-12	M-10
7573A - 8060	80	60	100	95	115	M-12	M-12
7573A - 10050	100	50	100	90	125	M-12	M-12
7573A - 100100	100	100	100	100	125	M-12	M-12
7573A - 120100	120	100	105	100	150	M-14	M-12
7573A - 150100	150	100	115	100	170	M-14	M-12
7573A - 200120	200	120	120	105	190	M-16	M-14
7573A - 250100	250	100	120	100	220	M-16	M-12

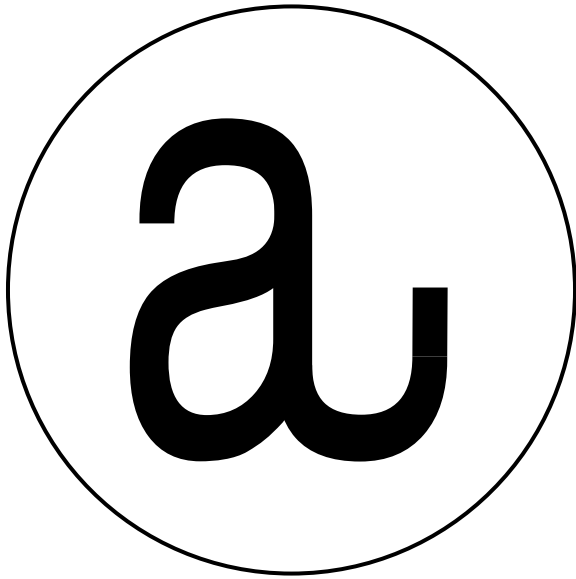
AISLADOR			
Referencia	J	E	D
1	14	76	105
2	18	127	155
3	18	225	260



NOTA : Indicar en la referencia el aislador Ejemplo 7573A - 7050.2

NOTA: Medidas mínimas / NOTE: Minimum measurements / NOTE: Mesures minimales







**AUXIEL S.L. - C/ La Morera, 2 - 28850
Torrejón de Ardoz (Madrid)**

**Tel: +34 914 984 255
+34 670 068 738**

www.auxiel.com

e-mail: connectors@auxiel.com